

**Maxtor**<sup>®</sup>

# Central Axis™

Network storage server



Quick Start Guide

# Table of Contents

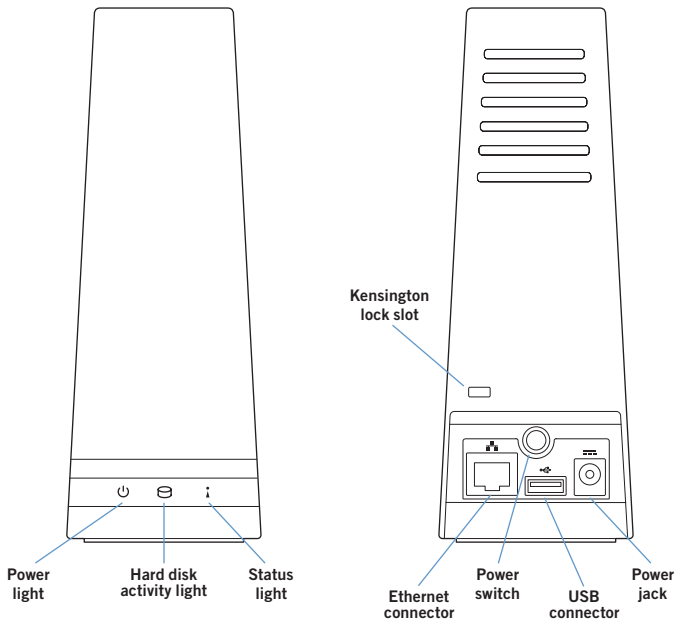
<b>Welcome .....</b>	<b>1</b>
<b>Product Diagram .....</b>	<b>2</b>
<b>Windows Installation .....</b>	<b>3</b>
<b>Macintosh Installation .....</b>	<b>12</b>
<b>Support .....</b>	<b>22</b>
<b>FCC Declaration of Conformance .....</b>	<b>23</b>

# Welcome

**By choosing the Central Axis™ network storage server, you have chosen a simple, cost-effective way to back up the data on the computers on your small network.**

**Please review the following information to set up and begin using your new storage server.**

# Product Diagram



# Windows XP or Vista Installation

## Part 1: Plug it in.

1. Connect one end of the supplied Ethernet cable to an Ethernet port on your router or switch.
2. Connect the other end of the Ethernet cable to the Ethernet port on your Central Axis storage server.
3. Connect the round plug of the power supply to the Central Axis storage server power jack.
4. Connect the standard electrical plug of the power supply to your AC power source.

## Part 2: Turn it on.

1. Press the power button on the back of your Central Axis storage server. On the front panel, the power light on the left illuminates and the status light on the right flashes. The hard disk activity light in the center flashes intermittently.
2. Wait for the status light to shine steadily. For more information about the drive LEDs, see the *Maxtor Central Axis User Guide for Windows* found on the CD.

### Part 3: Install the software.

1. Insert the Maxtor Central Axis storage server CD into your computer. The **Welcome** screen opens automatically.

*Note: If the Welcome screen doesn't open, browse to the CD and double-click the Launch.exe file.*

2. Follow the on-screen instructions to install the software.
3. When the software installation is complete, a Maxtor Manager icon appears on your desktop:



4. Double-click the Maxtor Manager icon. The Maxtor Manager application opens on your desktop and searches for Central Axis storage server devices on your network. When your Central Axis storage server is found, its Host Name, IP address, and MAC address are displayed.

*Note: If the message "No Central Axis storage server drives were found" appears, visit our support website at <http://support.seagate.com> and click TROUBLESHOOTING for tips.*

## Part 4: Set Up the Central Axis Storage Server.

Here's what you'll do to set up your Central Axis storage server:

- Set up your Central Axis storage server and set an administrator password on the Central Axis storage server admin web page so non-administrators cannot change your settings.
- Set up a Central Axis storage server user account in the Maxtor Manager application on your desktop so you can copy data onto the Central Axis storage server or schedule backups to it.
- Create a free Seagate Global Access account on the Seagate Global Access website so you can access files stored on your Central Axis storage server from any computer with an Internet connection.
- Link your Seagate Global Access account and your Central Axis storage server account using the Maxtor Manager application so Seagate Global Access knows which files on the Central Axis storage server to show you. As you use the Maxtor Manager application on your desktop, click the **? Help** button found in every window for detailed information or view the user guides found on the Maxtor Central Axis storage server CD.

## Set Up the Central Axis Storage Server and Set an Administrator Password:

**Step 1:** In the Maxtor Manager application, click **Settings** in the **My Drives** window:



**Step 2:** In the **Settings** window, click **Maxtor Central Axis Storage Server Admin Page**:

*Note: In order to set up Web Access and Sharing for the data in an account, the account has to be private.*





The first of three **Setup** pages opens:



**Step 3:** Provide the required information on the three **Setup** pages to set up your Central Axis storage server, including the creation of an admin password on the second **Setup** page.

*Note: When you create an “admin” password, you’re automatically assigned the username admin.*

After you complete the setup wizard, you’re prompted to log in.

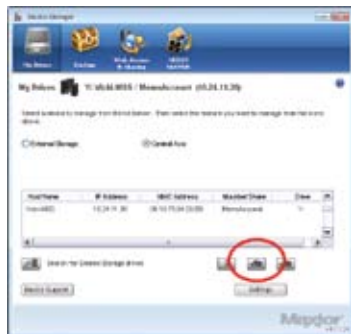
- Your username is **admin**.
- Your password is the admin password you just set in the **Setup** page.

Whenever you log into the Central Axis storage server admin page, your username will be **admin** and your password the one you set here.

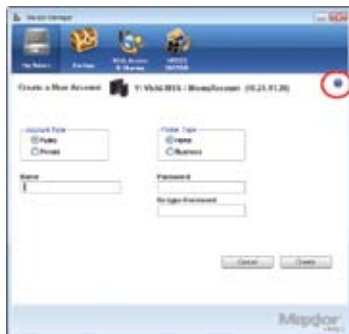
Click **? Help** on any of the three **Setup** pages or view the *Maxtor Central Axis Storage Server Admin User Guide* found on the Maxtor Central Axis storage server CD for detailed information on setting up your Central Axis storage server and setting an admin password.

## Set Up a Central Axis Storage Server User Account:

**Step 1:** In the Maxtor Manager application, click the **Create a User Account** button in the **My Drives** window:



**Step 2:** In the **Create a User Account** window, set up a user account:



Click the **? Help** button or view the *Maxtor Central Axis User Guide for Windows* found on the Central Axis storage server CD for detailed information on creating a user account.

## Create a Seagate Global Access Account:

**Step 1:** In the Maxtor Manager application, click the **Web Access & Sharing** icon:



**Step 2:** In the **Web Access & Sharing** window, click **Visit Web Access Site**:



**Step 3:** On the Seagate Global Access **Sign In** page, enter your email address below **Don't Have an Account?** and click **Send**:



The screenshot shows the 'Sign In' page for Seagate Global Access. It has two main sections: 'Sign In' and 'Don't Have an Account?'. The 'Don't Have an Account?' section is circled in red and contains an email address input field and a 'Send' button. The 'Sign In' section also has an email address input field and a 'Send' button.

An email will be sent to the address you enter.

**Step 4:** Follow the instructions in the email to complete the account registration.

Click **? Help** or view the *Seagate Global Access User Guide* found on the Maxtor Central Axis storage server CD for detailed information on creating a Seagate Global Access account.

## Link your Seagate Global Access Account and your Central Axis Storage Server Account:

**Step 1:** In the Maxtor Manager application, click the **Web Access & Sharing** icon:



**Step 2:** In the **Web Access & Sharing** window, click **Enable/Disable Web Access**:



**Step 3:** Follow the on-screen instructions to enter your local Central Axis storage server account information and then your Seagate Global Access account information.

Click the **? Help** button or view the *Maxtor Central Axis User Guide for Windows* found on the Maxtor Central Axis storage server CD for detailed information about your local Central Axis storage server and Seagate Global Access user accounts.

## User Guides

You'll find PDFs of four Maxtor Central Axis storage server user guides in the **Guides** folder on the CD to help you use the Maxtor Central Axis storage server:

- **Maxtor Central Axis User Guide for Windows:** Information on using the components of the Maxtor Central Axis storage server software installed on your PC.
- **Maxtor Central Axis User Guide for Macintosh:** Information on using the components of the Maxtor Central Axis storage server software installed on your Macintosh.
- **Maxtor Central Axis Storage Server Admin User Guide:** Information on using the admin web page.
- **Seagate Global Access User Guide:** Information on accessing files stored on your Central Axis storage server via the Internet using the Seagate Global Access service.

# Macintosh Installation (OS X 10.4.11 or later)

## Part 1: Plug it in.

1. Connect one end of the supplied Ethernet cable to an Ethernet port on your router or switch.
2. Connect the other end of the Ethernet cable to the Ethernet port on your Central Axis storage server.
3. Connect the round plug of the power supply to the Central Axis storage server power jack.
4. Connect the standard electrical plug of the power supply to your AC power source.

## Part 2: Turn it on.

1. Press the power button on the back of your Central Axis storage server. On the front panel, the power light on the left illuminates and the status light on the right flashes. The hard disk activity light in the center flashes intermittently.
2. Wait for the status light to shine steadily. For more information about the drive LEDs, see the *Maxtor Central Axis User Guide for Macintosh* found on the CD.

### Part 3: Install the software.

1. Insert the Maxtor Central Axis storage server CD into your computer, open the CD, and double-click the Maxtor Central Axis Manager installer.
2. Follow the on-screen instructions to install the software.
3. When the software installation is complete, a Maxtor Central Axis Manager icon appears on your desktop.
4. Double-click the Maxtor Central Axis Manager icon.
5. Enter your Mac OS X password in the Authenticate window. The Maxtor Central Axis Manager application opens on your desktop and searches for Central Axis storage server devices on your network. When your Central Axis storage server is found, its Central Axis storage server ID and IP address are displayed.

*Note: If the message “No Central Axis storage server drives were found” appears, visit our support website at <http://support.seagate.com> and click TROUBLE-SHOOTING for tips.*



## Part 4: Set Up the Central Axis Storage Server.

Here's what you'll do to set up your Central Axis storage server:

- Set up your Central Axis storage server and set an administrator password on the Central Axis storage server admin web page so non-administrators cannot change your settings. Your installation is complete. You are now ready to save your life.
- Set up a Central Axis storage server user account in the Maxtor Central Axis Manager application on your desktop so you can copy data onto the Central Axis storage server or schedule backups to it.
- Create a free Seagate Global Access account on the Seagate Global Access website so you can access files stored on your Central Axis storage server from any computer with an Internet connection.

- Link your Seagate Global Access account and your Central Axis storage server account using the Maxtor Central Axis Manager application so Seagate Global Access knows which files on the Central Axis storage server to show you.

As you use the Maxtor Central Axis Manager application on your desktop, click the **? Help** button found in every window for detailed information or view the user guides found on the Maxtor Central Axis storage server CD.



## Set Up the Central Axis Storage Server and Set an Administrator Password:

**Step 1:** In the Maxtor Central Axis Manager application, click **Settings** in the main window:



In the **Advanced** tab of the **Settings** window, click **Central Axis Administration**.



The first of three **Setup** pages opens:



**Step 2:** Provide the required information on the three **Setup** pages to set up your Central Axis storage server, including the creation of an admin password on the second **Setup** page.

*Note: When you create an admin password, you're automatically assigned the username admin.*

After you complete the setup wizard, you're prompted to log in.

- Your username is **admin**.
- Your password is the admin password you just set in the **Setup** page.

Whenever you log into the Central Axis storage server admin page, your username will be **admin** and your password the one you set here.

Click **? Help** on any of the three **Setup** pages or view the *Maxtor Central Axis Storage Server Admin User Guide* found on the Maxtor Central Axis storage server CD for detailed information on setting up your Central Axis storage server and setting an admin password.

## Set Up a Central Axis Storage Server User Account:

**Step 1:** In the Maxtor Central Axis Manager application, click the **Create a User Account** button in the main window:



**Step 2:** In the **Create a User Account** window, set up a user account:



Click the **? Help** button or view the *Maxtor Central Axis User Guide for Macintosh* found on the Central Axis storage server CD for detailed information on creating a user account.

*Note: In order to set up Web Access and Sharing for the data in an account, the account has to be private.*

## Create a Seagate Global Access Account:

**Step 1:** In the Maxtor Central Axis Manager application, click the **Web Access & Sharing** icon:



**Step 2:** In the **Web Access & Sharing** sheet, click **Visit Web Access Website**:



## Link your Seagate Global Access Account and your Central Axis Storage Server Account:

**Step 3:** On the Seagate Global Access **Sign In** page, enter your email address below **Don't Have an Account?** and click **Send**:



**Step 1:** In the Maxtor Central Axis Manager application, click the **Web Access & Sharing** icon:

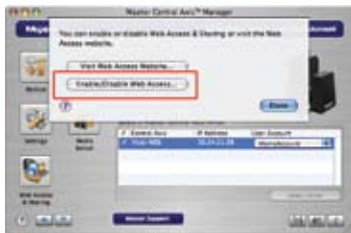


An email will be sent to the address you enter.

**Step 4:** Follow the instructions in the email to complete the account registration.

Click **? Help** or view the *Seagate Global Access User Guide* found on the Maxtor Central Axis storage server CD for detailed information on creating a Seagate Global Access account.

**Step 2:** In the **Web Access & Sharing** sheet, click **Enable/Disable Web Access:**



**Step 3:** Follow the on-screen instructions to enter your local Central Axis storage server account information and then your Seagate Global Access account information.

Click the **? Help** button or view the *Maxtor Central Axis User Guide for Macintosh* found on the Maxtor Central Axis storage server CD for detailed information about your local Central Axis storage server and Seagate Global Access user accounts.

## User Guides

You'll find PDFs of four Maxtor Central Axis storage server user guides in the **Guides** folder on the CD to help you use the Maxtor Central Axis storage server:

- **Maxtor Central Axis User Guide for Windows:** Information on using the components of the Maxtor Central Axis storage server software installed on your PC.
- **Maxtor Central Axis User Guide for Macintosh:** Information on using the components of the Maxtor Central Axis storage server software installed on your Macintosh.
- **Maxtor Central Axis Storage Server Admin User Guide:** Information on using the admin web page.
- **Seagate Global Access User Guide:** Information on accessing files stored on your Central Axis storage server via the Internet using the Seagate Global Access service.

# Support

## We're Here to Help

Technical Support will answer technical and troubleshooting questions regarding your Maxtor Central Axis storage server during normal call center business hours. Before calling, note your system configuration and Maxtor Central Axis storage server model number. These numbers can be used to get help from Seagate Support, register your drive and look up information on the Seagate web site.

Please visit [www.seagate.com](http://www.seagate.com) to obtain the latest comprehensive support information— such as:

## Knowledge Base

Troubleshooting information, FAQ's, and technical documentation.

## Software Downloads

Installation software, utilities, and diagnostics.

## Product Index

Current and legacy Maxtor products.

## Warranty Services

Product returns (RMS), warranty status, and warranty information.

## Product Support

Installation assistance, product specifications, and user manuals.

# FCC Declaration of Conformance

This device complies with Part 15 of the FCC Rules. Operation is subject to the following two conditions: (1) this device may not cause harmful interference, and (2) this device must accept any interference received, including interference that may cause undesired operation.

## Class B

This equipment has been tested and found to comply with the limits for a Class B digital device, pursuant to Part 15 of the FCC Rules. These limits are designed to provide reasonable protection against harmful interference in residential installation. This equipment generates, uses, and can radiate radio frequency energy and, if not installed and used in accordance with the instructions, may cause harmful interference to radio communications. However, there is no guarantee that interference will not occur in a particular installation. If this equipment does cause harmful interference to radio

or television reception, which can be determined by turning the equipment off and on, the user is encouraged to try to correct the interference by one or more, of the following measures:

- Reorient or relocate the receiving antenna.
- Increase the separation between the equipment and receiver.
- Connect the equipment into an outlet on a circuit different from that to which the receiver is connected.
- Consult the dealer or an experienced radio/TV technician for help.

Caution: Any changes or modifications made to this equipment may void the user's authority to operate this equipment.



Copyright © 2008 Seagate Technology LLC. All rights reserved. Maxtor and the Maxtor stylized logo are registered trademarks of Seagate Technology LLC or one of its affiliated companies in the United States and/or other countries. Central Axis is either a trademark or registered trademark of Seagate Technology LLC or one of its affiliated companies in the United States and/or other countries. All other trademarks or registered trademarks are the property of their respective owners. When referring to hard drive capacity, one gigabyte, or GB, equals one billion bytes and one terabyte, or TB, equals one trillion bytes. Your computer's operating system may use a different standard of measurement and report a lower capacity. In addition, some of the listed capacity is used for formatting and other functions, and thus will not be available for data storage. Quantitative usage examples for various applications are for illustrative purposes. Actual quantities will vary based on various factors, including file size, file format, features and application software. Seagate reserves the right to change, without notice, product offerings or specifications. Seagate Technology, 920 Disc Drive, Scotts Valley, CA 95066 U.S.A. PN: 100504899 04/08

[maxtor.com](http://maxtor.com)